

How can librarians help students
access truthful and reliable
information?

Jay Kibby

Serials, Electronic Resources and
Interlibrary Loan Librarian
@ The Neil Hellman Library

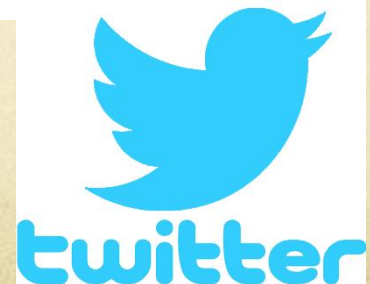
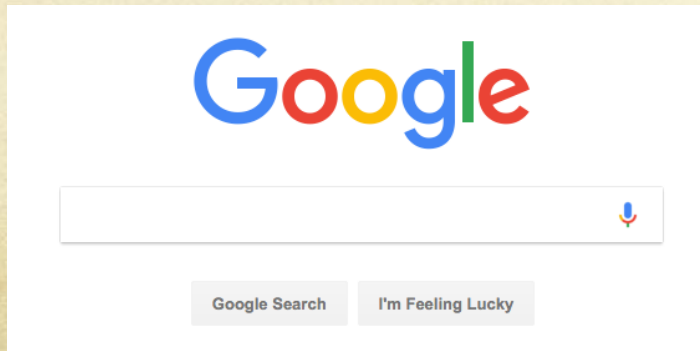
**“GOOGLE CAN BRING
YOU BACK 100,000
ANSWERS. A
LIBRARIAN CAN
BRING YOU BACK
THE RIGHT ONE.” —
NEIL GAIMAN**

Vetting Resources – Both scholarly and non-scholarly

- Authority
- Accuracy
- Currency
- Agenda?
- Author's sources
- Peer-review or editor review



A screenshot of the Neil Hellman Library website. The header includes the text "THE COLLEGE OF SAINT ROSE Neil Hellman Library WE EMPOWER CURIOUS MINDS." and navigation links for "Books", "Research by Subject", "Services", "Archives", "Curriculum Library", and "Get Help". There is also an "Admin Sign In" link. The main content area features a search bar with the text "Search All Library Resources" and a search button. Below the search bar, there are links for "Try Advanced Search" and "About". A section titled "ASK A LIBRARIAN" includes a text input field and an "Ask" button. To the right, there is a "TODAY'S HOURS" section with a "Closed" status and "Spring 2017 Hours" for January 17 - May 10. The hours are listed for Monday through Sunday. A "Click here to see full hours and exceptions." link is provided at the bottom of the hours section.



Information Literacy Instruction – a shameless plug

- Tailored to your needs
 - Web-based resource instruction can be included
- BUT please request in advance
- Upper level classes, too!
 - Transfer students
 - International students
 - Graduate students
 - Writing-intensive classes
 - Theses and capstone projects
- library.strose.edu/libraryInstruction



Reference

- Reference desk at Neil Hellman Library
 - Staffed whenever library is open
 - This semester – staffed 10am-close Mon-Fri
 - Librarian available at all times
- Online help
 - library.strose.edu/help
 - 24/7 chat under review
- One on one appointments
 - library.strose.edu/prt



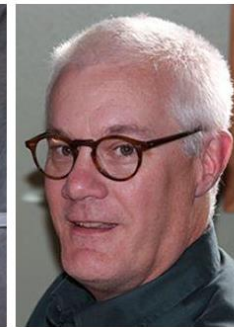
Kate Moss

(518) 454-2154

[Send Kate Email](#)

Most Experienced With
Literary criticism
Philosophy
History/Political Science

Personal Interests
Horseback riding
The outdoors
Gardening
Cooking



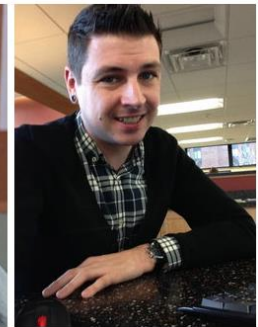
Peter Osterhoudt

(518) 454-2026

[Send Pete Email](#)

Most Experienced With
Business

Personal Interests
Movies
Comic Books
Sports



Jay Kibby

(518) 458-5182

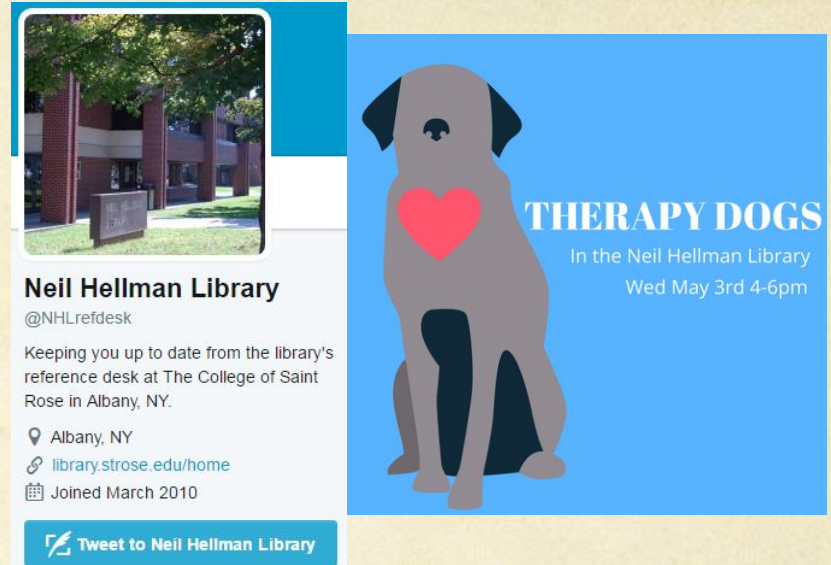
[Send Jay Email](#)


Most Experienced With
Music
Computer Science

Personal Interests
Hiking/Biking/Exploring
Architecture
Fashion

Outreach

- Student events
- Social media
- Tailored to specific groups
 - Veterans
 - LGBT community






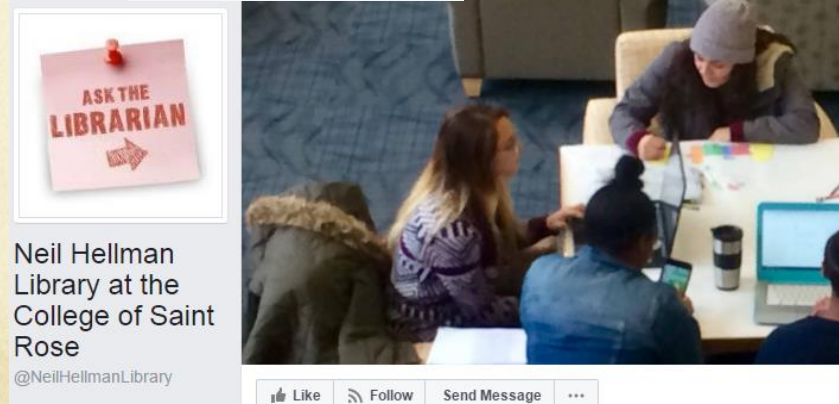
Neil Hellman Library
@NHLrefdesk


Keeping you up to date from the library's reference desk at The College of Saint Rose in Albany, NY.

📍 Albany, NY
🔗 library.strose.edu/home
📅 Joined March 2010


[Tweet to Neil Hellman Library](#)

 **THERAPY DOGS**
In the Neil Hellman Library
Wed May 3rd 4-6pm





Neil Hellman Library at the College of Saint Rose
@NeilHellmanLibrary



👍 Like 📡 Follow 📧 Send Message ⋮

“Fake News” as a Political Slur

- Why is it effective and what can we learn?
- Keep it short
 - Three words tops
 - Four only if needed
- Such as:
 - Check their sources
 - Is it current?
 - What's their purpose?
 - Author's credentials?



The CRAP Test

○ Currency

○ Reliability

○ Authority

○ Purpose/Point of View

<http://libguides.southmountaincc.edu/CRAPtest>

HOW TO SPOT FAKE NEWS



CONSIDER THE SOURCE

Click away from the story to investigate the site, its mission and its contact info.



READ BEYOND

Headlines can be outrageous in an effort to get clicks. What's the whole story?



CHECK THE AUTHOR

Do a quick search on the author. Are they credible? Are they real?



SUPPORTING SOURCES?

Click on those links. Determine if the info given actually supports the story.



CHECK THE DATE

Reposting old news stories doesn't mean they're relevant to current events.



IS IT A JOKE?

If it is too outlandish, it might be satire. Research the site and author to be sure.



CHECK YOUR BIASES

Consider if your own beliefs could affect your judgement.



ASK THE EXPERTS

Ask a librarian, or consult a fact-checking site.

IFLA

International Federation of Library Associations and Institutions

www.ifla.org

<https://www.ifla.org/publications/node/11174>

Last but not least...

We are **always** happy to hear of more ways we might be able to help:

Email us: refdesk@strose.edu

Call us: 454-5181

Text us: 518-336-5277

Email me: kibbyj@strose.edu

Call me: 454-5182